



VN1R4 Polyclonal Antibody

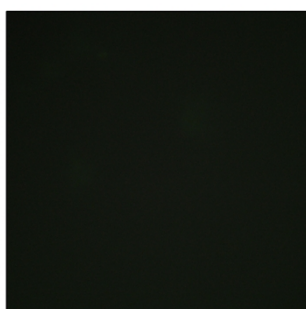
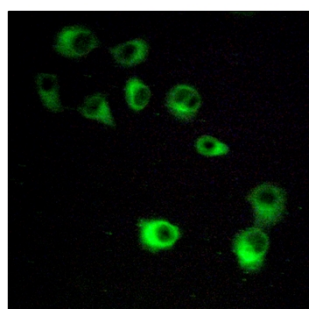
Catalog No	YP-Ab-12841
Isotype	IgG
Reactivity	Human;Monkey
Applications	WB;IF;ELISA
Gene Name	VN1R4
Protein Name	Vomeronasal type-1 receptor 4
Immunogen	The antiserum was produced against synthesized peptide derived from human VN1R4. AA range:88-137
Specificity	VN1R4 Polyclonal Antibody detects endogenous levels of VN1R4 protein.
Formulation	Liquid in PBS containing 50% glycerol, 0.5% BSA and 0.02% sodium azide.
Source	Polyclonal, Rabbit,IgG
Purification	The antibody was affinity-purified from rabbit antiserum by affinity-chromatography using epitope-specific immunogen.
Dilution	Western Blot: 1/500 - 1/2000. Immunofluorescence: 1/200 - 1/1000. ELISA: 1/20000. Not yet tested in other applications.
Concentration	1 mg/ml
Purity	≥90%
Storage Stability	-20°C/1 year
Synonyms	VN1R4; V1RL4; Vomeronasal type-1 receptor 4; G-protein coupled receptor GPCR27; hGPCR27; V1r-like receptor 4
Observed Band	34kD
Cell Pathway	Cell membrane; Multi-pass membrane protein.
Tissue Specificity	
Function	function:Putative pheromone receptor.,miscellaneous:The chimpanzee and gorilla orthologous proteins do not exist, their genes are pseudogenes.,online information:No one nose - Issue 61 of August 2005,polymorphism:Various VN1R4 alleles are known. The sequence shown is that of allele VN1R4*1.,similarity:Belongs to the G-protein coupled receptor 1 family.,
Background	function:Putative pheromone receptor.,miscellaneous:The chimpanzee and gorilla orthologous proteins do not exist, their genes are pseudogenes.,online information:No one nose - Issue 61 of August 2005,polymorphism:Various VN1R4 alleles are known. The sequence shown is that of allele VN1R4*1.,similarity:Belongs to the G-protein coupled receptor 1 family.,
matters needing attention	Avoid repeated freezing and thawing!



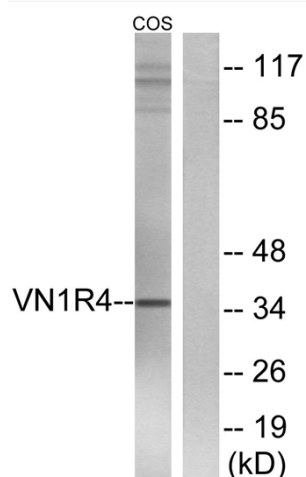
Usage suggestions

This product can be used in immunological reaction related experiments. For more information, please consult technical personnel.

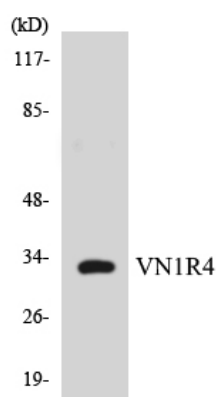
Products Images



Immunofluorescence analysis of MCF7 cells, using VN1R4 Antibody. The picture on the right is blocked with the synthesized peptide.



Western blot analysis of lysates from COS7 cells, using VN1R4 Antibody. The lane on the right is blocked with the synthesized peptide.



Western blot analysis of the lysates from COLO205 cells using VN1R4 antibody.